



Pierre Mouton -
 Montana & Montana
 Tuine
 0845567812
 pierre@justimagineproperties.com

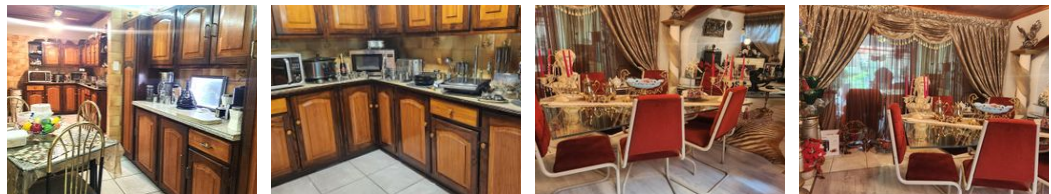
Contact Head Office

081 4042817

5 Portofino,
 753 Old Farm Road,
 Faerie Glen
 Pretoria



Web Ref RL14532



R2,540,000

Monthly Bond Repayment R26,217.59
 Calculated over 20 years at 11% with no deposit.

Transfer Costs R118,920.00 **Bond Costs** R38,415.00
 These calculations are only a guide. Please ask your conveyancer for exact calculations.

Monthly Rates R1,165

 4  2  2

Wonderful Elarduspark property, in very good location for family home or office

If you are looking for an opportunity to open offices well located with easy access routes to the N1 and Pretoria East and Central, this is your chance. This well sized property also provides ample space for a family with two lounges, 4 bedrooms, a bar, flatlet and large grounds with a swimming pool. With shopping centers, Waterkloof High School, Elardus Park Primary School, Pre Schools, Country Clubs, Kloof Hospital and the famous Wolvespruit Park you will have all you need at the drop of a hat.

 Words and phrases have strong meanings. The word JUST would refer to being "treated Fair" and "with Respect." The word IMAGINE stems from the Latin word that would refer to "Image" or "Picture." PROPERTY has its origin in the Latin word "Proprietatem" that means "Enjoyment" and the "Right of Possession." In conclusion...

Features

Pets Allowed	Yes				
Interior		Exterior		Sizes	
Bedrooms	4	Garages	2	Floor Size	376m ²
Bathrooms	2	Carports / Parkings	1	Land Size	1,250m ²
Kitchens	1	Security	Yes		
Recep. Rooms	3	Pool	Yes		

