

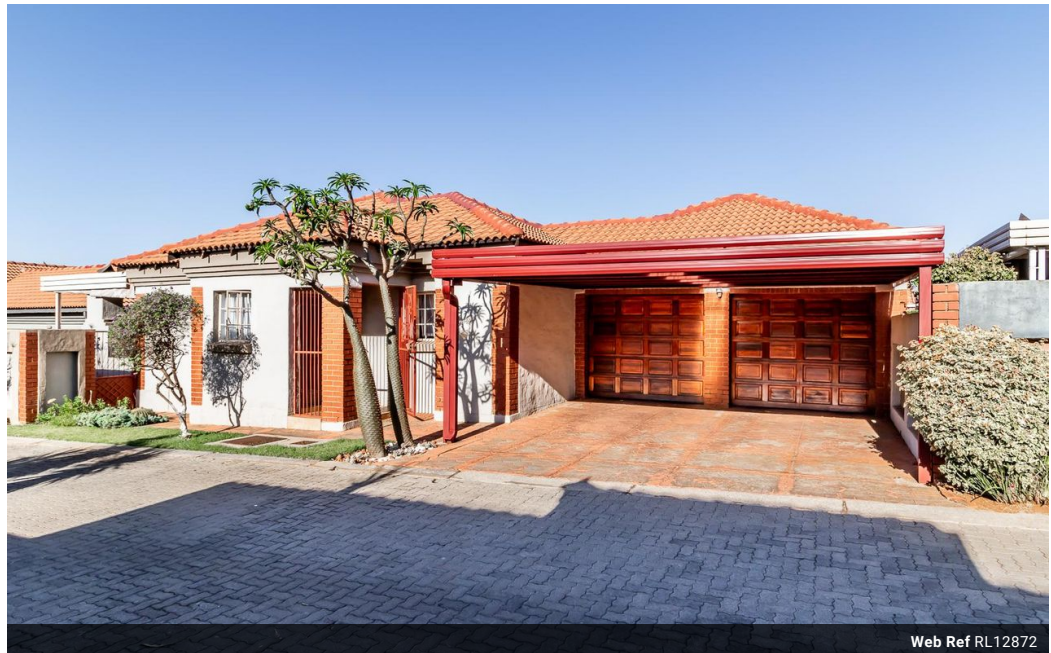


**Kobus Eloff - Zambezi
Country Estate &
Montana Park**
0812228960
Kobus@justimagineproperties.com

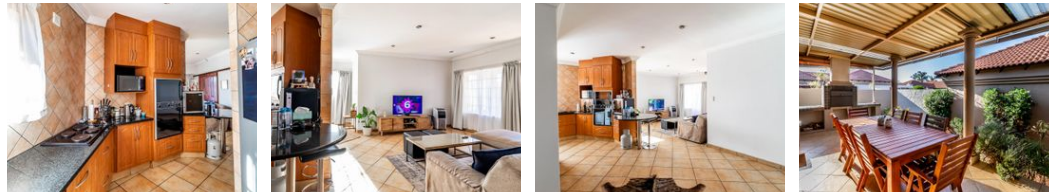
Contact Head Office

081 4042817

5 Portofino,
753 Old Farm Road,
Faerie Glen
Pretoria



Web Ref RL12872



R1,750,000

Monthly Bond Repayment R18,063.30
Calculated over 20 years at 11% with no deposit.

Transfer Costs R58,039.00 **Bond Costs** R30,875.00

These calculations are only a guide. Please ask your conveyancer for exact calculations.

Monthly Rates R1,122

 3  2  2

QUIET, PEACEFUL AND CHARMING...

Welcome to this charming townhouse in the heart of Montana Park! This modern 3-bedroom, 2-bathroom gem is perfect for start-up or small families seeking a cozy yet stylish home.

Step inside to discover a spacious, neatly designed interior with an open-plan kitchen. The kitchen's unique shape adds character to the space, and it's a hub for culinary creativity. The living area flows seamlessly, and a small covered patio with a built-in braai provides a delightful space for outdoor gatherings.

The 3 bedrooms are generously sized, offering ample room for your family's comfort. The main bedroom boasts an en-suite bathroom for added privacy. With plenty of built-in cupboards throughout, storage space is never an issue.

While there's no garden to maintain, this low-maintenance property allows you to enjoy your weekends...

Features

Pets Allowed Yes

Interior

Bedrooms 3
Bathrooms 2
Kitchens 1
Recep. Rooms 2

Exterior

Garages 2
Carports / Parkings 2
Pool No

Sizes

Floor Size 137m²
Land Size 372m²

