



Kobus Eloff - Zambezi Country Estate & Montana Park
 0812228960
 Kobus@justimagineproperties.com

Contact Head Office

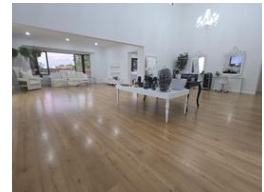
081 4042817

5 Portofino,
 753 Old Farm Road,
 Faerie Glen
 Pretoria



SOLE MANDATE

Web Ref RL14228



R3,200,000

Monthly Bond Repayment R33,030.03
 Calculated over 20 years at 11% with no deposit.

Transfer Costs R184,379.00 **Bond Costs** R44,070.00
 These calculations are only a guide. Please ask your conveyancer for exact calculations.

Monthly Rates R2,080

 4  4  3

Ultra-Modern & Elegant 4-bedroom Mansion with Apartment, above Besembiesie street in Montana Park

Ultra-Modern 4-Bedroom Property for Sale in Montana Park

Discover the potential of this stunning property in Montana Park, set against a serene cul-de-sac with mountain views. Currently configured as a beauty spa, it offers flexibility for Residential or Business use. With its sophisticated and modern interiors, this home is a perfect blend of functionality and luxury, ready for the high-end lifestyle.

Property Highlights:

Kitchen:
 Spacious and functional kitchen with separate scullery. The flatlet have its own kitchenette.

Expansive, double volume Living Areas:
 Enter through an Ultra-Modern reception area with a welcoming staircase and four spacious large open-plan living areas, filled with natural light. The high ceilings and elegant chandeliers create a sophisticated atmosphere.

4 Bedrooms:
 All en-suite

Features

Pets Allowed		Interior		Exterior		Sizes	
Yes		Bedrooms	4	Garages	3	Floor Size	589m ²
		Bathrooms	4	Carports / Parkings	2	Land Size	1,842m ²
		Kitchens	2	Security	Yes		
		Recep. Rooms	5	Dom. Accom.	1		
		Studies	2	Pool	Yes		
		Furnished	No				

Extras
 Cul-De-Sac Parking in stand for 25 plus cars Two-bedroom Flatlet with separate entrance
 Playground/ gym/ or another flatlet with separate entrance Irrigation Aircons Fibre

