

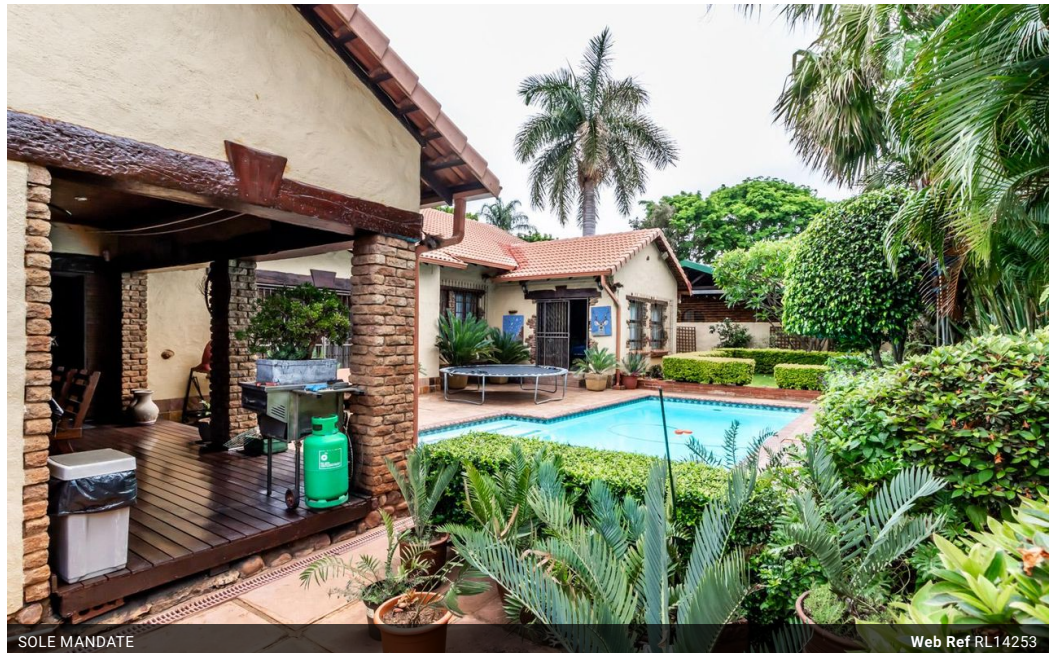


Kobus Eloff - Zambezi Country Estate & Montana Park
 0812228960
 Kobus@justimagineproperties.com

Contact Head Office

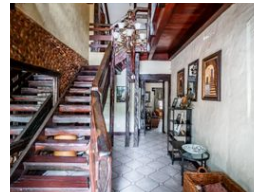
081 4042817

5 Portofino,
 753 Old Farm Road,
 Faerie Glen
 Pretoria



SOLE MANDATE

Web Ref RL14253



R2,850,000

Monthly Bond Repayment R29,417.37
 Calculated over 20 years at 11% with no deposit.

Transfer Costs R148,055.00 **Bond Costs** R42,185.00
 These calculations are only a guide. Please ask your conveyancer for exact calculations.

Monthly Rates R2,338

 5  4.5  3

Elegant European-Inspired Home in Montana Park

This stunning family home exudes charm and sophistication, offering generous living spaces and an exquisite design.

Features:

Bedrooms & Bathrooms:

Five expansive bedrooms with ample storage, complemented by four stylish bathrooms and a guest cloakroom. The primary suite includes a luxurious full en-suite, while the additional bathrooms cater to every need with modern fittings, including a freestanding tub and sleek shower options.

Living Areas:

Three distinct spaces for relaxation and entertainment—a formal dining area, a cozy lounge with a built-in bar, and a warm family room perfect for gatherings.

Gourmet Kitchen:

A chef's dream with a combination of gas and electric cooking facilities, granite countertops, and a convenient scullery for added functionality.

Outdoor Delights:

Features

Pets Allowed		Interior		Exterior		Sizes	
Yes		Bedrooms	5	Garages	3	Floor Size	395m ²
		Bathrooms	4.5	Carports / Parkings	1	Land Size	1,004m ²
		Kitchens	1	Security	Yes		
		Recep. Rooms	3.5	Dom. Accom.	1		
		Furnished	No	Pool	Yes		

