



Kobus Eloff - Zambezi Country Estate & Montana Park
 0812228960
 Kobus@justimagineproperties.com

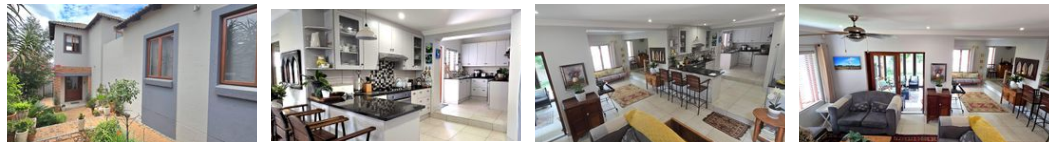
Contact Head Office

081 4042817

5 Portofino,
 753 Old Farm Road,
 Faerie Glen
 Pretoria



Web Ref RL14497



R2,795,000

Monthly Bond Repayment R28,849.67
 Calculated over 20 years at 11% with no deposit.

Transfer Costs R141,487.00 **Bond Costs** R40,300.00
 These calculations are only a guide. Please ask your conveyancer for exact calculations.

Monthly Levy R1,000

 3  2.5  2

Pristine 3 Bedroom House for sale in an Estate

Move in ready modern home for Sale in Montana Park

Discover this stunning 3-bedroom family home in a sought-after estate, offering modern finishes, spacious living areas, and top-tier security-a perfect blend of comfort and convenience!

Property Features:

- 3 Spacious Bedrooms - All fitted with built-in cupboards, blinds, and stylish large tiles
- 2 Modern Bathrooms - Main en-suite with double basin, large shower, bath & toilet; second full bathroom shared by two bedrooms
- Upstairs Pajama Lounge/Study - Ideal as a home office or creative space
- Open-Plan Living - Lounge, dining area, and enclosed patio with built-in braai
- Sleek Kitchen - Granite countertops, ample cupboard space, gas stove, space for a double fridge, and a separate scullery/laundry
- Guest Toilet - Conveniently located downstairs
- Double...

Features

Pets Allowed	Yes			
Interior		Exterior	Sizes	
Bedrooms	3	Garages	Floor Size	237m ²
Bathrooms	2.5	Carports / Parkings		
Kitchens	1.5	Security		
Recep. Rooms	3	Dom. Accom.		
Studies	0.5	Pool		
Furnished	No			

Extras

Extremely sought after estate House in excellent condition Solar Geyser Prepaid electricity Gas stove Inverter Security

