



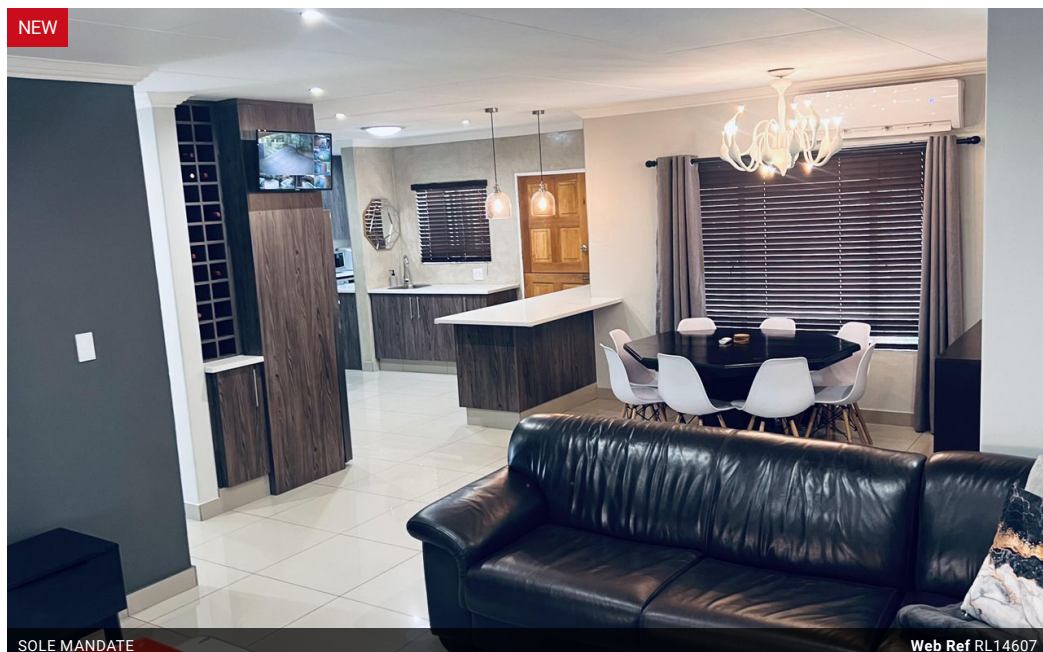
Kobus Eloff - Zambezi
Country Estate &
Montana Park
0812228960
Kobus@justimagineproperties.com

Contact Head Office

081 4042817

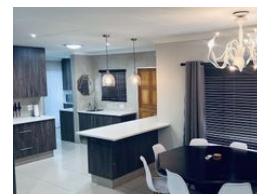
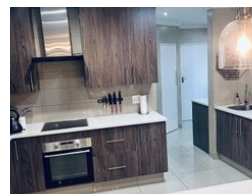
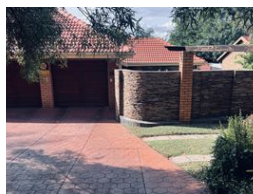
5 Portofino,
753 Old Farm Road,
Faerie Glen
Pretoria

3 Bedroom House For Sale in Montana Park



SOLE MANDATE

Web Ref RL14607



R2,390,000

3 2.5 2

Monthly Bond Repayment R24,669.30

Calculated over 20 years at 11% with no deposit.

Transfer Costs R104,752.00 **Bond Costs** R36,530.00

These calculations are only a guide. Please ask your conveyancer for exact calculations.

Monthly Rates R1,220

Modern & contemporary 3-bedroom smart duet home in quiet crescent in Montana Park

This stunning, modern 3-bedroom, 2.5-bathroom duet home offers luxurious living with high-end finishes and a host of premium features. Perfect for families or those who love to entertain, the home is designed for comfort and convenience.

Prime location: Above Besembiesie

Key Features:

Bedrooms: 3 spacious bedrooms, 2 en-suite rooms, leading out to the patio

Bathrooms: 2.5 bathrooms,

Modern Kitchen: Fully equipped with quartz tops, with high-end appliances and finishes

Extra Large Laundry: Spacious and functional laundry room

Living areas: Three contemporary, generously sized living areas with seamless flow for modern living. Whether it is a cozy family lounge, a formal sitting room, or a versatile entertainment space, each area balances comfort with stylish functionality.

Features

Pets Allowed Yes

Interior

Bedrooms	3
Bathrooms	2.5
Kitchens	1
Recep. Rooms	3
Furnished	No

Exterior

Garages	2
Carports / Parkings	1
Security	Yes
Pool	Yes

Sizes

Floor Size	245m ²
Land Size	600m ²

Extras

Above Besembiesie CCTV Study Bar Smart home Sprinkler system Wooden blinds 8kw Inverter 10kw Battery Air conditioners

