



Pierre Mouton -
Montana & Montana
Tuine
 0845567812
 pierre@justimagineproperties.com

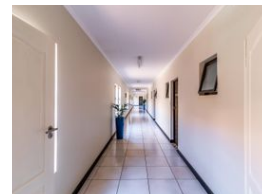
Contact Head Office

081 4042817

5 Portofino,
 753 Old Farm Road,
 Faerie Glen
 Pretoria



Web Ref RL14142



R1,085,000



Monthly Bond Repayment R11,199.24
 Calculated over 20 years at 11% with no deposit.

Transfer Costs R32,749.00 **Bond Costs** R25,220.00

These calculations are only a guide. Please ask your conveyancer for exact calculations.

Monthly Levy R1,182 **Monthly Rates** R485

You can retire with the knowledge that your safety, comfort and peace is a priority.

Zambesi Retirement Village is proud of being a very well managed facility with a sense of space and beautiful, well kept, natural grounds.

The village provides all you need, plus a little bit more. It has a frail care unit for specialised care plus it has a vibrant, multi-functional social community.

The village is nestled on a terrain with lots of space and beauty for long, peaceful hikes.

This unit has one bedroom with one bathroom and an open plan living area and kitchen, is North facing for winter comfort and has a sliding door with small patio, but space outside.

The property is part of the frail care service in the village.

It is the only frail care centre that offers ownership of a one bedroom apartment within the boundaries of the frail care facility.

Entering the building into a corridor towards the front door...

Features

Interior		Exterior		Sizes	
Bedrooms	1	Security	Yes	Floor Size	53m ²
Bathrooms	1	Pool	No		
Kitchens	1				
Recep. Rooms	2				

