



**Pierre Mouton -**  
**Montana & Montana**  
**Tuine**  
 0845567812  
 pierre@justimagineproperties.com

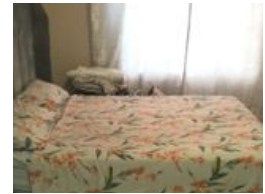
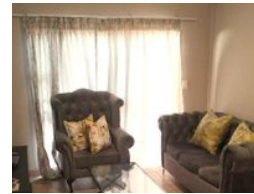
Contact Head Office

081 4042817

5 Portofino,  
 753 Old Farm Road,  
 Faerie Glen  
 Pretoria



Web Ref RL13165



**R550,000**

 1  1

**Monthly Bond Repayment** R5,677.04  
 Calculated over 20 years at 11% with no deposit.

**Transfer Costs** R21,217.00 **Bond Costs** R15,795.00

These calculations are only a guide. Please ask your conveyancer for exact calculations.

**Monthly Levy** R1,065

Bargain hunting? Get this 1 bed, 1 bath apartment in Montana, Pretoria, for a VERY good price

This 1 bed, 1 bath apartment with tenant, if you choose is looking for an investor or starter to the property market. The unit provides quality finishes with granite counter tops in the kitchen, more storage than an average apartment, a utility closet with water and electric connections for a washing machine etc. The bedroom has a walk-through closet with space for a queen. The en suite bathroom to the bedroom is fully tiled and has a bath/shower combo. The whole apartment is North facing, ensuring warmth in winter and lots of light. Lisa's Place is a settled and well managed complex and centrally located in Montana close to Montana High School, Montana Hospital, public and other transport routes. Levies include security, building insurance, maintenance of the outside of buildings, maintenance of communal areas.

Words...

**Features**

Interior		Exterior		Sizes	
Bedrooms	1	Carports / Parkings	1	Floor Size	65m <sup>2</sup>
Bathrooms	1	Security	Yes		
Kitchens	1	Pool	No		
Recep. Rooms	1				