

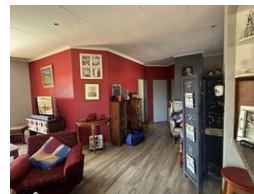
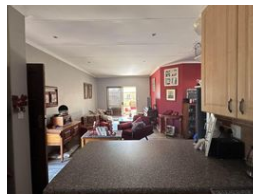
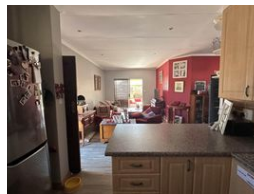
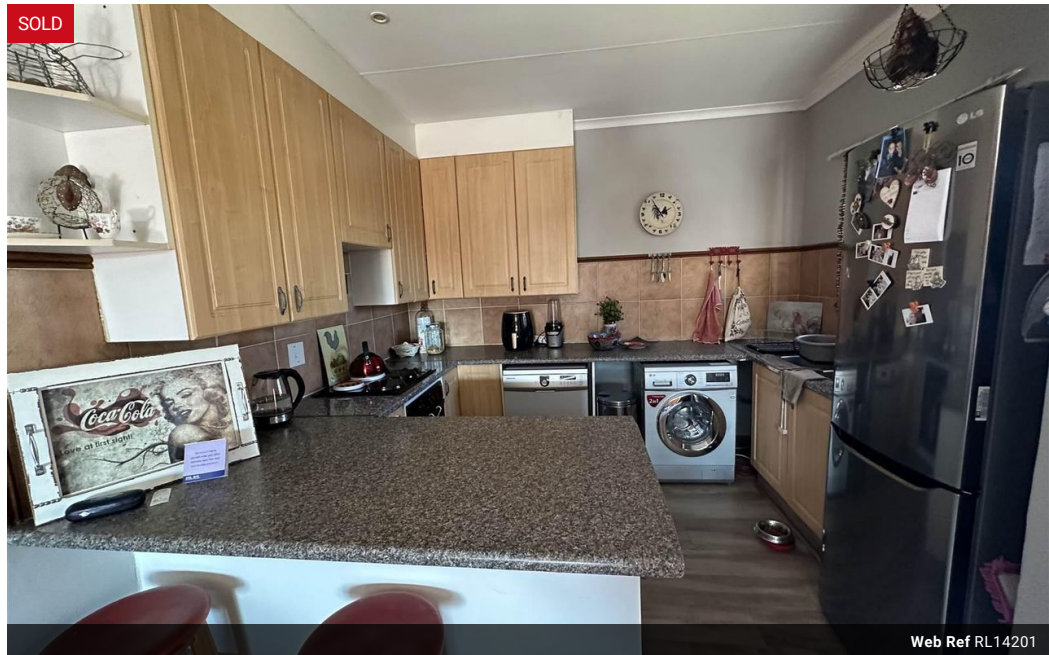


Rohann Mattheus -
Mooikloof & Moreleta
Park
0649142598
Rohann@justimagineproperties.com

Contact Head Office

081 4042817

5 Portofino,
753 Old Farm Road,
Faerie Glen
Pretoria



R1,065,000

 3  2  2

Monthly Bond Repayment R10,992.81
Calculated over 20 years at 11% with no deposit.

Transfer Costs R32,749.00 **Bond Costs** R25,220.00

These calculations are only a guide. Please ask your conveyancer for exact calculations.

Monthly Levy R2,550 **Monthly Rates** R800

3 or 2 bedroom Townhouse in Secure Estate

Spacious (originally a 3-bedroom) now converted to a 2-bedroom townhouse located in secure lifestyle estate.

Can be converted back to a 3-bedroom unit, should you not enjoy the additional space provided by the incorporation of the 3rd bedroom into the open plan living room.

Corner unit with well sized garden

Open plan living room, kitchen and dining room

2 Bathrooms

2 Garages

Patio with decking extension

Ample extra parking

The estate offers:

Features

Pets Allowed Yes

Interior
Bedrooms 3
Bathrooms 2
Kitchens 1
Recep. Rooms 1.5
Furnished No

Exterior
Garages 2
Security Yes
Pool Yes

Sizes
Floor Size 122m²

