

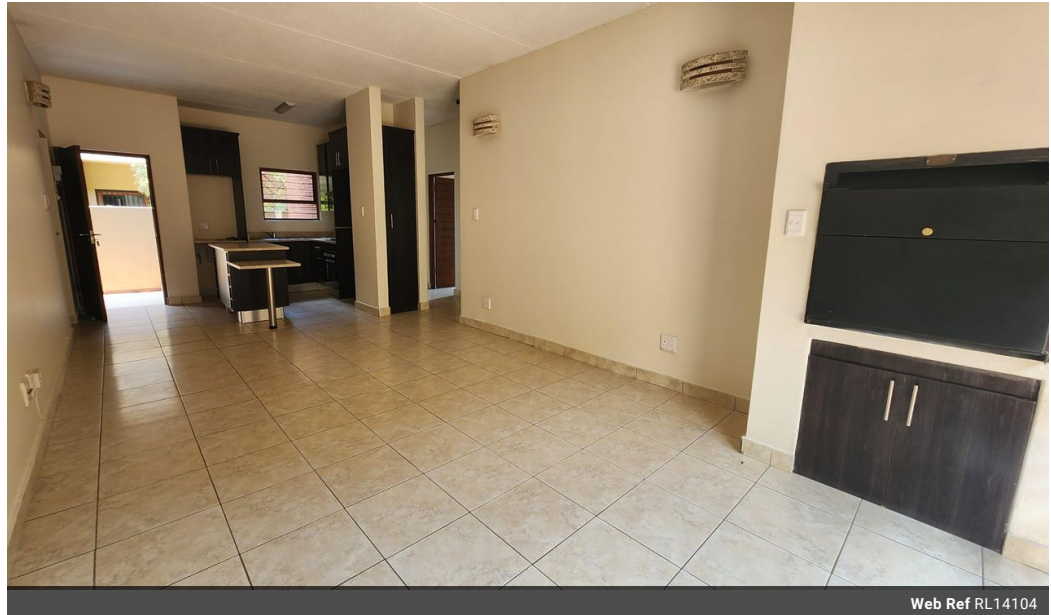


Rohann Mattheus -
Mooikloof & Moreleta
Park
0649142598
Rohann@justimagineproperties.com

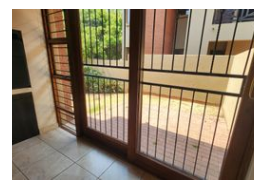
Contact Head Office

081 4042817

5 Portofino,
753 Old Farm Road,
Faerie Glen
Pretoria



Web Ref RL14104



R995,000

 2  2

Monthly Bond Repayment R10,270.27

Calculated over 20 years at 11% with no deposit.

Transfer Costs R30,412.00 **Bond Costs** R23,335.00

These calculations are only a guide. Please ask your conveyancer for exact calculations.

Monthly Levy R1,510 **Monthly Rates** R580

Well positioned Corner Groundfloor Apartment

Well positioned Corner Groundfloor Apartment in secure lifestyle estate.

- 2 Bedrooms
- 2 Bathrooms
- Kitchen with space for ALL appliances
- Open plan living area with built in gas braai
- 2 x store rooms
- Corner unit garden
- 2 Carports

The estate offers

- Running and walking possibilities
- Dam
- Swimming pool
- Clubhouse
- Kids play area

Features

Pets Allowed Yes

Interior

Bedrooms	2
Bathrooms	2
Kitchens	1
Recep. Rooms	1.5
Furnished	No

Exterior

Carports / Parkings	2
Security	Yes
Pool	Yes

Sizes

Floor Size	74m ²
------------	------------------

