

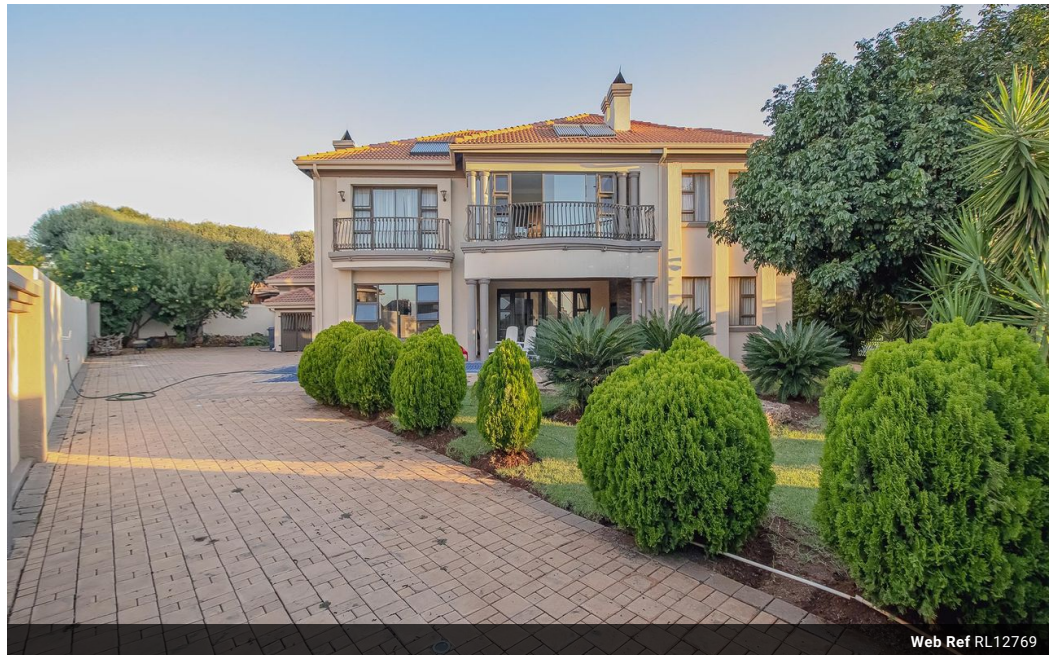


Kobus Eloff - Zambezi Country Estate & Montana Park
0812228960
Kobus@justimagineproperties.com

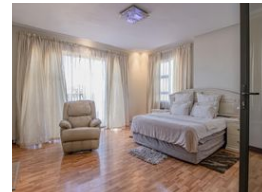
Contact Head Office

081 4042817

5 Portofino,
753 Old Farm Road,
Faerie Glen
Pretoria



Web Ref RL12769



R4,500,000

5 Bedrooms, 4 Bathrooms, 3 Garages

Monthly Bond Repayment R46,448.48
Calculated over 20 years at 11% with no deposit.

Transfer Costs R343,009.00 **Bond Costs** R57,265.00
These calculations are only a guide. Please ask your conveyancer for exact calculations.

Monthly Levy R2,200 **Monthly Rates** R3,500

GRAND TWO-STORY PALACE...

Welcome to your dream home in the heart of Zambezi Country Estate! This beautiful double-story house is a modern marvel, exuding an aura of elegance and comfort. With its pristine appearance and abundant natural light, this home is a haven for those seeking both space and style.

Step inside and be captivated by the spaciousness that defines this house. Boasting five bedrooms and four bathrooms, it's the perfect retreat for a growing family or anyone who loves to entertain guests. The pristine upkeep of the property is evident from the moment you set foot inside.

The kitchen is a unique masterpiece, every chef's dream come true. Its modern design and sleek appliances are sure to inspire your culinary adventures. This is where delicious meals and unforgettable memories will be created.

When it comes to entertainment,...

Features

Pets Allowed Yes

Interior

Bedrooms 5
Bathrooms 4
Kitchens 1
Recep. Rooms 4
Studies 1

Exterior

Garages 3
Carports / Parkings 1
Security Yes
Dom. Accom. 2
Pool Yes
Views Yes

Sizes

Floor Size 600m²
Land Size 1,161m²

Extras

Solar geyser, 2x built-in braai, fire place, modern showers

