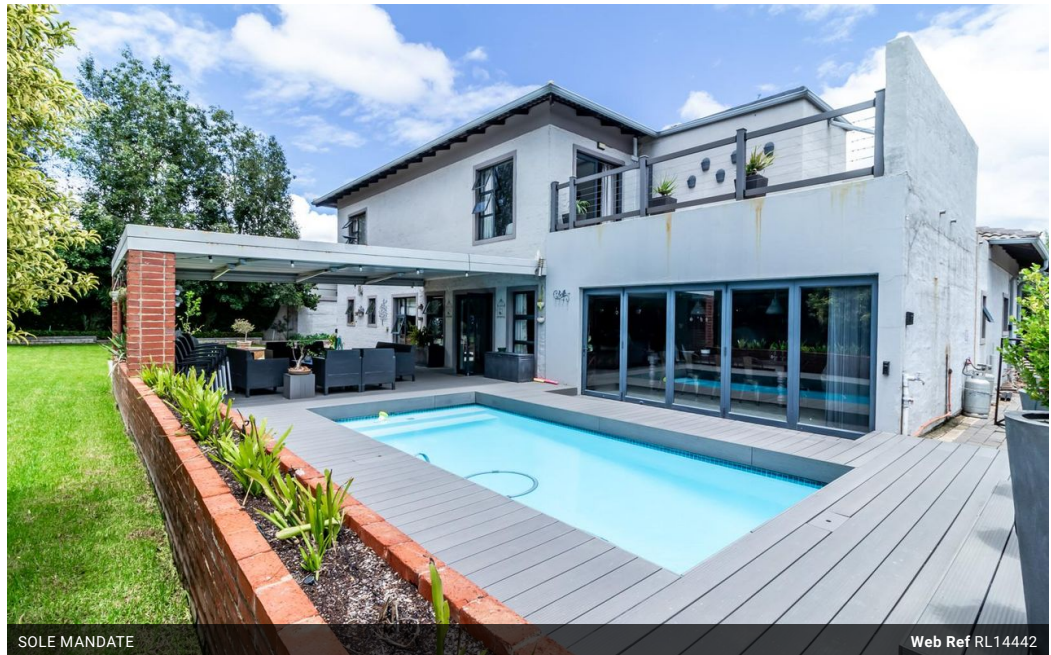


**Kobus Eloff - Zambezi Country Estate & Montana Park**  
 0812228960  
 Kobus@justimagineproperties.com

Contact Head Office

081 4042817

5 Portofino,  
 753 Old Farm Road,  
 Faerie Glen  
 Pretoria



SOLE MANDATE

Web Ref RL14442



**R5,100,000**

 4  5.5  4

**Monthly Bond Repayment** R52,641.61  
 Calculated over 20 years at 11% with no deposit.

**Transfer Costs** R418,807.00 **Bond Costs** R65,785.00  
 These calculations are only a guide. Please ask your conveyancer for exact calculations.

**Monthly Levy** R2,000 **Monthly Rates** R1,830

House for sale In Zambezi Country Estate, basically next to green area

Exquisite 4-Bedroom Home in a Serene Cul-de-Sac - Zambezi Country Estate. A stone throw away from the green area.

Nestled in the sought-after Zambezi Country Estate, this stunning home is a masterpiece of modern luxury and practicality. Located in a quiet cul-de-sac, it offers the perfect combination of style, comfort, and eco-friendly living. Very close to green area,

Property Features:

4 Bedrooms, All En-Suite - Spacious and beautifully designed for ultimate privacy.

5.5 Bathrooms - Luxurious finishes throughout.

Open-Plan Living Areas - Seamlessly flowing spaces for entertaining and relaxation.

Gourmet Kitchen - Equipped with a gas stove, hobs, and sleek granite countertops.

Charming Entertainment area & braai room - A cozy retreat with scenic views of the property.

An open - plan home at its...

### Features

**Pets Allowed** Yes

#### Interior

Bedrooms 4  
 Bathrooms 5.5  
 Kitchens 1  
 Recep. Rooms 3  
 Studies 1  
 Furnished No

#### Exterior

Garages 4  
 Security Yes  
 Pool Yes

#### Sizes

Floor Size 500m<sup>2</sup>  
 Land Size 984m<sup>2</sup>

#### Extras

Entertainment & braai room 10kw Inverter 10kw Batteries 12 solar panels Prepaid electricity  
 Sprinkler system 5000 liter water tank Borehole Heat pump 2 solar gas geysers 4 aircons

